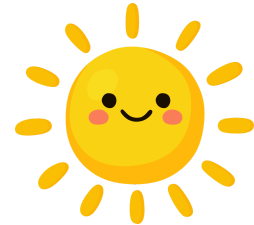




OUR LADY'S CATHOLIC PRIMARY

Newsletter - 26.6.26



Scorchio!

Well, many of us were perhaps grumbling about the lack of a summer and then this week we've been hit hard by the heatwave!

I'd like to thank you all for your understanding as we catered for your children's needs in challenging conditions.

A big shout out to the staff too for they continued care of your children.

Thankfully we can get back to normal on Monday as the forecast for next week is for the temperatures to be around 21 degrees celsius which is more typical for this time of year. In fact, I might get my jumper back out!

Mr Gilby





OUR LADY'S CATHOLIC PRIMARY

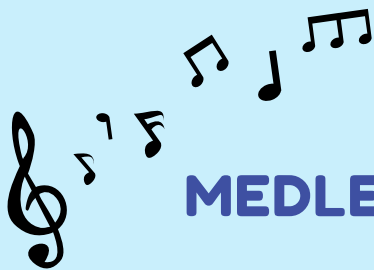
Newsletter - 25.6.26

**Despite the energy-sapping weather, life at
Our Lady's has been as busy as ever!**



SELF DEFENCE CLASS

SPORTS DAY



MEDLEY MUSIC

ROCK STEADY

WILLOW HUB CHOIR PRACTICE

SHAKESPEARE REHEARSALS



AUTHOR EVENTS

Faith corner

Our Mission Statement



As Our Lady instructed, we are called to follow His Word (John 2:5) - learning with love, joy and hope.

The children have been learning about what it means to be a follower of Jesus.



**FOLLOW ME
AND I WILL MAKE YOU
FISHERS OF MEN**
MATTHEW 4:19

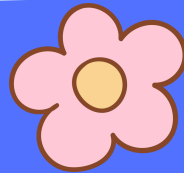
Attendance...



The school target each week is 96%.

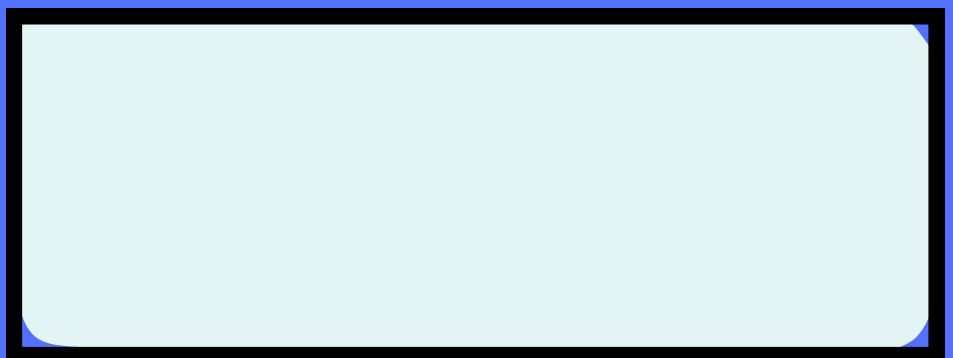
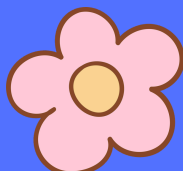
This week was... not 96%!

Attendance is crucial for your child's learning development so let's work together to keep their attendance levels as high as they can be...



Let's try and smash 96% again next week - WE CAN DO IT!

The weather impacted attendance heavily but let's get back to normal on Monday everyone!



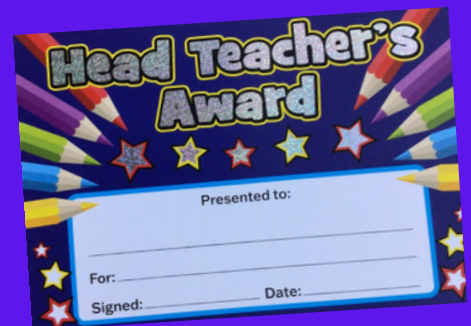
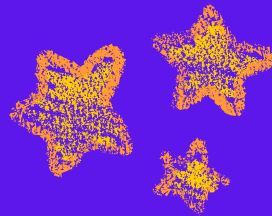


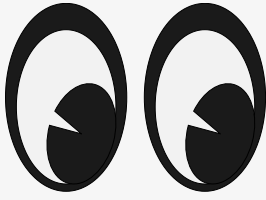
Recognition Awards

In Friday's assembly, we are proud to celebrate pupils who gained Recognition Certificates for attributes such as kind behaviour, positive attitudes and superb classwork...

We also celebrate those who did amazing Maths work with their TTRS or Numbot work!

We celebrate great lunchtime behaviour, with a certificate and..... the greatest pencil in the world!
And Mr Gilby likes to give a headteacher award to outstanding pupils!





What's coming up:

JUNE

Tue. 30th = 9am REARRANGED Y5 CST Assembly - parents welcome.

JULY

Wed. 1st = 10 - 11.30am New Reception pupils STAY & PLAY. (Group 1)

Wed 1st + Thur 2nd = Y6 Transition days.

Thur 2nd = 9.15 - 11.45pm KS1 Stockton Heath Library visit.

Thur 2nd = 2.30pm Y1 Book & Biscuit session.

Tue. 7th = All day - Y4 at Shakespeare Festival at Lowry.

Tue. 7th = 6pm Willow Hub Choir with Mr Gilby at Parr Hall.

Wed. 8th = 10 - 11.30am New Reception pupils STAY & PLAY. (Group 2)

Wed. 8th = 2.30pm Y2 Book & Biscuit session.

Thur. 9th = From 2.30pm Medley Music Concert at St.Oswald's.

Fri. 10th = 9.30am Y3-5 School of Kindness Workshop.

Fri.10th = 10am start Y6 Leavers' Mass in church: parents welcome.

Mon. 13th - Wed. 15th = Y6 Robinwood Trip.

Mon. 13th = Pupils informed of next year's class structure.

Mon. 13th = 2.30pm Book & Biscuit session.

Wed. 15th = 12.30 EYFS/KS1 Multi skills Event at Lymm High.

Thur. 16th = 10am - 2pm Y5 at Safety Central.

Thur. 16th = End of Year Reports out.

Fri. 17th = 2pm Y6 Leavers' Party.

Mon. 20th = Pupil Meet the new Teacher afternoon session.

Tue. 21st = 2.15pm Y6 Leavers' Assembly - parents welcome.

Wed. 22nd = 2.30pm HT End of Year Assembly.

Wed. 22nd = 3.15pm School guard of honour outside Y6 exit doors then...

SCHOOL CLOSED FOR SUMMER - CALENDAR ON WEBSITE.

Staying Healthy at Our Lady's



Tasty Tuck Snack List

Banana
Grapes (cut lengthways)
Oranges / tangerines
Pears
Apples
Berries
Carrot Sticks

Cucumber
Bread sticks
Cheese straws
Babybels
Yoghurt tubes
Plain rice cakes

None of the following are permitted snacks in school: Chocolate, sweets, cakes, biscuits, crisps...

And to drink...

Water ... or, Low sugar cordial / juice

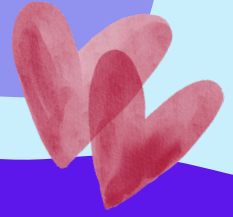


We were proud of our Tasty Tuck Award last year and want to continue encouraging children to eat healthily. Thank you to parents for supporting us and being mindful of our posters...

As well as healthy snacks at break times, we would kindly ask that any packed lunches also have a good balance of foods with no chocolate.

Chocolate can be used as a treat at home...

Staying Safe with Our Lady's



At Our Lady's it is imperative that consistent and effective safeguarding procedures are in place to support learners and staff at school. It is our aim through rigorous safeguarding procedures, as well as our pastoral care that Our Lady's is an environment where students feel safe and supported in order to reach their potential.

We work with a number of external agencies to ensure that all our students are supported and safeguarded. Often families need additional help and support to navigate difficult times and school can offer a helping hand.

We have a dedicated team who can offer advice and introduce a range of support options:

Mr Gilby (DSL) ; Miss Rowland (Dep. DSL) ; Mrs Storey (Dep. DSL)

- **Children's Social Care:** At Our Lady's we follow the procedures set out in Keeping Children Safe in Education and will work with parents to ensure the best outcomes for their child. Warrington Children's Social Care can be contacted on 01925 443400
- **Early Help:** we can also refer to the Early Help team if families would prefer a professional separate to school. Early Help can offer support around a wide range of issues including attendance, behaviour, housing, parental mental health, child mental health etc. You can find out more at <https://www.warrington.gov.uk/early-help>
- **Online Safety:** Many young people live some part of their lives online and it is essential that they are safe and understand the risks involved. We ensure that Online Safety is taught in PSHE as well as a range of curriculum areas. If you are worried about your child being online then please contact school to discuss your concerns. Further advice can be found here: [NSPCC](#)
- **Operation Encompass:** Our Designated Safeguarding Lead receives information about abusive incidents directly via email from the police that they have attended an incident of domestic abuse to which a child has been exposed. This timely knowledge allows appropriate support to be made for that child. The initiative was launched county-wide in 2015 and is active in all Warrington schools and beyond. You can find out more about Operation Encompass here: <https://www.operationencompass.org>