



OUR LADY'S CATHOLIC PRIMARY

Newsletter - 15.5.26

Faith corner

First Holy Communion

Last Saturday our Y3 children who had completed their sacramental preparations, received the Eucharist at Mass.

It was truly a wonderful occasion and lovely to see the children with their families.

A huge thank you to Fr Peter for all his work during this time and all the parishioners who helped at St. John Henry Newman Church.



*One family, happy and thriving
through God's love*



OUR LADY'S CATHOLIC PRIMARY

Newsletter - 15.5.26

Teeth Matters

Our pupils recently showed their teeth and (probably) shouted 'cheese' last week for their class photographs which look great. Please get your orders in to the office as soon as you can...



Today our children received a visit from BRIGHT BITES who spoke to them about the importance of caring for their teeth and how to do this. There were some important messages given to help our pupils keep their lovely smiles shining!

*One family, happy and thriving
through God's love*



OUR LADY'S CATHOLIC PRIMARY

Newsletter - 1.5.26



2026-2027



We are finalising our plans for the next academic year (2026-27) and after the Whit holiday we will bring your final details of class structures, etc.

Next year's school calendar is already on our website.



One bit of news we can share today is that we are delighted to announce Miss Rowland has been appointed as Interim Deputy Headteacher for next year.

*One family, happy and thriving
through God's love*

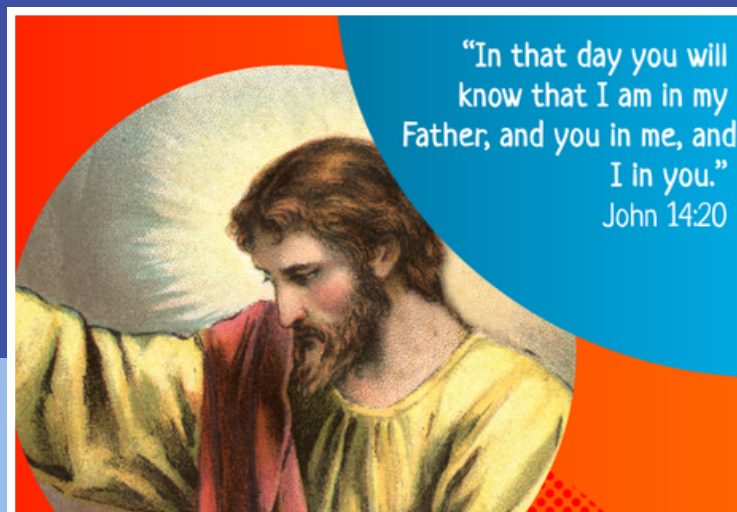
Faith corner

Our Mission Statement



As Our Lady instructed, we are called to follow His Word (John 2:5) - learning with love, joy and hope.

In the gospel this week, the children heard about Jesus revealing His deep and close connection with God the Father. Children learnt that through Jesus, we too can have a close relationship with God. and fill our hearts with His love.



This week our Y4 Prayer Leaders chose to pray about world hunger asking God to help those who go hungry...



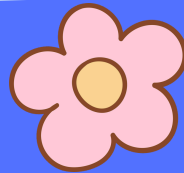
Attendance...



The school target each week is 96%.

This week was... 95%

Attendance is crucial for your child's learning development so let's work together to keep their attendance levels as high as they can be...



Rec: 93%

Y1: 96%

Y2: 97%

Y3: 94%

Y4: 97%

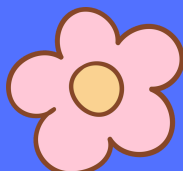
Y5: 93%

Y6: 96%

This week's class winners
are Y2 & Y4 with 97%
Well done!

This week's 100%
champion is XXXXXX

Well done!



Attendance Reminders...

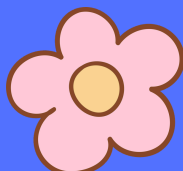


A reminder that **EVERY TIME** your child is absent, you **MUST** inform the school of the reason why your child is absent, using the phone or office email [details on website].

A reminder that if your child is absent for a medical reason, you **MUST** provide school with evidence of the appointment.

A reminder that if you intend to remove your child from school for a holiday, you **MUST** let the school know in writing or by email.

Thank you



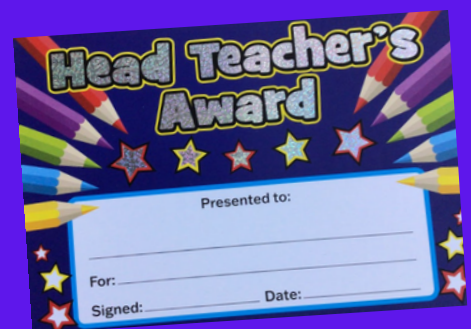
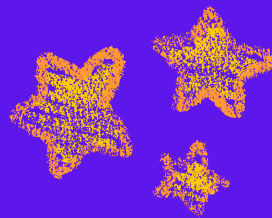
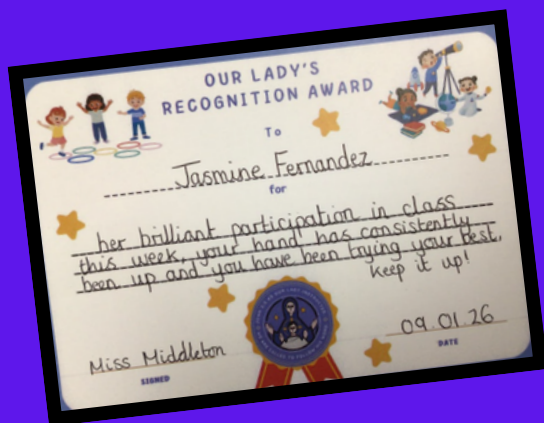
Recognition Awards

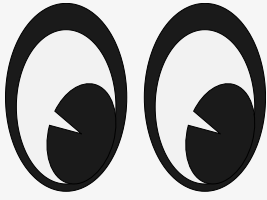
In Friday's assembly, we are proud to celebrate pupils who gained Recognition Certificates for attributes such as kind behaviour, positive attitudes and superb classwork...

We also celebrate those who did amazing Maths work with their TTRS or Numbot work!

We celebrate great lunchtime behaviour, with a certificate and..... the greatest pencil in the world!

And Mr Gilby likes to give a headteacher award to outstanding pupils! Well done Kara in Y2 for ALWAYS living out our school values!





What's coming up:

MAY

Mon. 18th = Magnificent Mary Day! This celebration of Mary includes a non-uniform day for £1 to support the Willow Hub Fundraiser (pupils wear what makes them happy) and an assembly at 11am - parents welcome.

Tues 19th = Y4 football competition at Liverpool Academy.

Fri. 22nd Y6 Gulliver's Trip

Fri. 22nd Last day - 2 week Whit holiday.

JUNE

Mon. 8th = SCHOOL OPEN AGAIN!

Thur 11th = SPORTS DAY: EYFS & KS1 in morning; KS2 in afternoon.

Fri. 12th = Changemakers Presentation Day at Chester Zoo.

Tue. 16th = Y5 Taster Day at Cardinal Newman Catholic High School.

Mon. 22nd = Assessment week.

Mon 22nd = Outdoor Activities Fundraising stalls - all week.

Thur. 25th = 9am - 12.30pm Road to Glasgow Sports Festival at Orford Hub.

Fri. 26th = 2.30pm Y5 CST Assembly - parents welcome.

Head teacher's comment...

Well our Y6 must be very happy now their end of key stage exams are over. They can be proud of themselves knowing they have worked hard with Rowland this year.

Congratulations again to Miss Rowland who will continue to be a great support to myself on the leadership team as interim Deputy Headteacher.

As always, may you have a peaceful and happy weekend.

Mr Gilby



Website: <https://ourladys-primary.co.uk/>

Facebook: <https://www.facebook.com/OLWA4>

Instagram: ourladyswa4

Staying Healthy at Our Lady's



Tasty Tuck Snack List

Banana
Grapes (cut lengthways)
Oranges / tangerines
Pears
Apples
Berries
Carrot Sticks

Cucumber
Bread sticks
Cheese straws
Babybels
Yoghurt tubes
Plain rice cakes

None of the following are permitted snacks in school: Chocolate, sweets, cakes, biscuits, crisps...

And to drink...

Water ... or, Low sugar cordial / juice

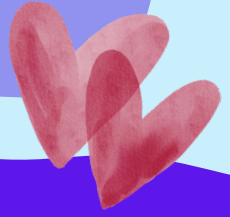


We were proud of our Tasty Tuck Award last year and want to continue encouraging children to eat healthily. Thank you to parents for supporting us and being mindful of our posters...

As well as healthy snacks at break times, we would kindly ask that any packed lunches also have a good balance of foods with no chocolate.

Chocolate can be used as a treat at home...

Staying Safe with Our Lady's



At Our Lady's it is imperative that consistent and effective safeguarding procedures are in place to support learners and staff at school. It is our aim through rigorous safeguarding procedures, as well as our pastoral care that Our Lady's is an environment where students feel safe and supported in order to reach their potential.

We work with a number of external agencies to ensure that all our students are supported and safeguarded. Often families need additional help and support to navigate difficult times and school can offer a helping hand.

We have a dedicated team who can offer advice and introduce a range of support options:

Mr Gilby (DSL) ; Miss Rowland (Dep. DSL) ; Mrs Storey (Dep. DSL)

- **Children's Social Care:** At Our Lady's we follow the procedures set out in Keeping Children Safe in Education and will work with parents to ensure the best outcomes for their child. Warrington Children's Social Care can be contacted on 01925 443400
- **Early Help:** we can also refer to the Early Help team if families would prefer a professional separate to school. Early Help can offer support around a wide range of issues including attendance, behaviour, housing, parental mental health, child mental health etc. You can find out more at <https://www.warrington.gov.uk/early-help>
- **Online Safety:** Many young people live some part of their lives online and it is essential that they are safe and understand the risks involved. We ensure that Online Safety is taught in PSHE as well as a range of curriculum areas. If you are worried about your child being online then please contact school to discuss your concerns. Further advice can be found here: [NSPCC](#)
- **Operation Encompass:** Our Designated Safeguarding Lead receives information about abusive incidents directly via email from the police that they have attended an incident of domestic abuse to which a child has been exposed. This timely knowledge allows appropriate support to be made for that child. The initiative was launched county-wide in 2015 and is active in all Warrington schools and beyond. You can find out more about Operation Encompass here: <https://www.operationencompass.org>